



# Hello

**We're excited about your visit,  
and hope the tips in here help  
you have a really enjoyable time.**





I can wear headphones and bring fidget toys.

I can buy food and drink in the foyer before or after the show, using a credit or debit card but not cash.

I can only take a water bottle with me into the theatre.

A small bag is OK to bring into the theatre. Any bag larger than an A4 piece of paper can be cloaked at the cloakroom.

There is a Quiet Space nearby if I need a break.



# Hello

Welcome to the Sydney Opera House.



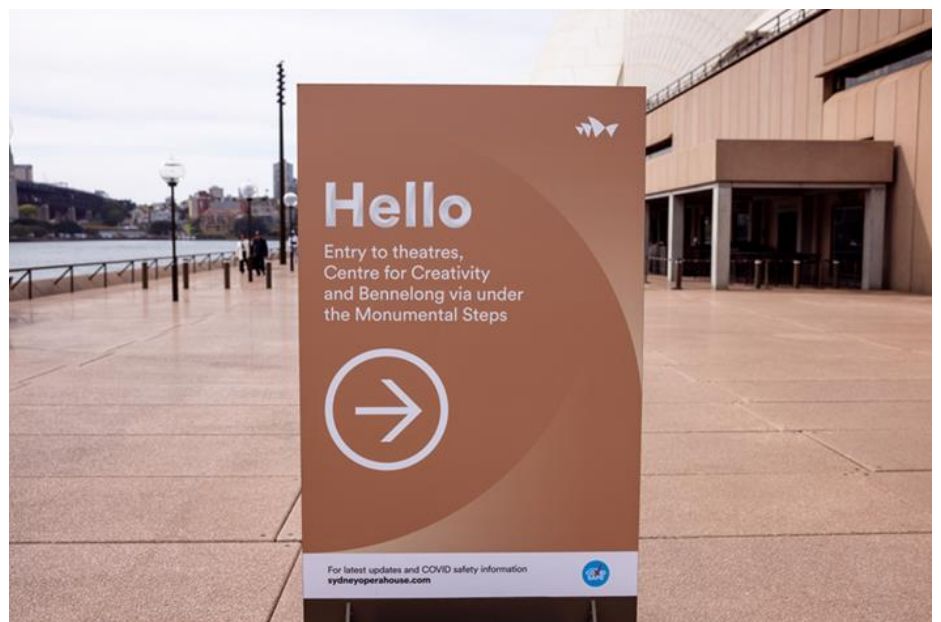
## 1

I will walk across a large open space to the building.



## 2

The entry to the Playhouse Theatre is underneath the steps.



# 3

Staff will be able to assist me if I need help.  
Welcome Team staff wear orange shirts.



# 4

Security staff wear blue uniforms.



# 5

Front of House staff wear blue and beige uniforms.



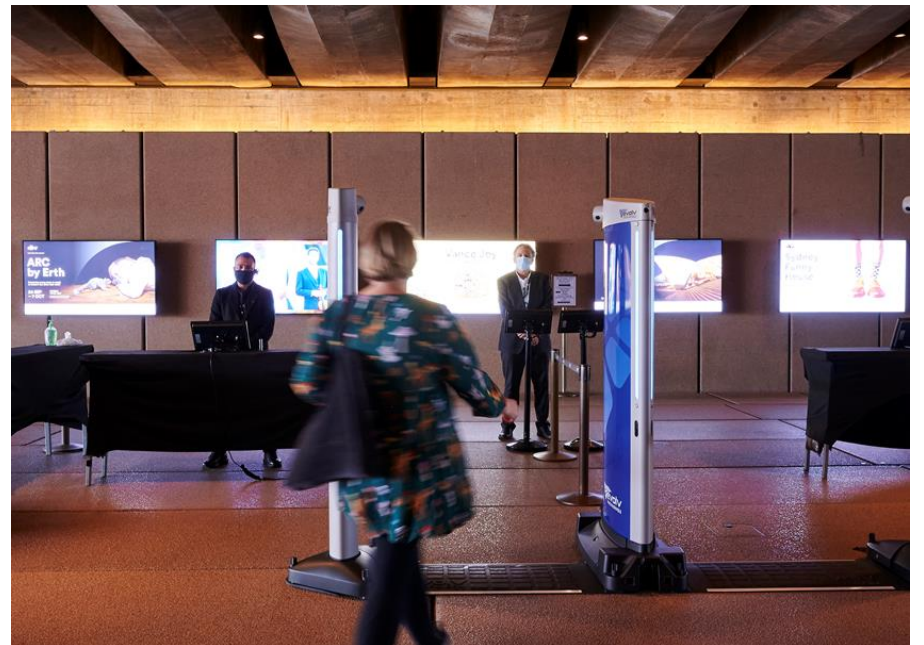
# 6

I will see a queue under the steps.



# 7

I will walk through an electronic gate.



# 8

Staff may do a bag inspection.  
Security do these checks to keep everyone safe.



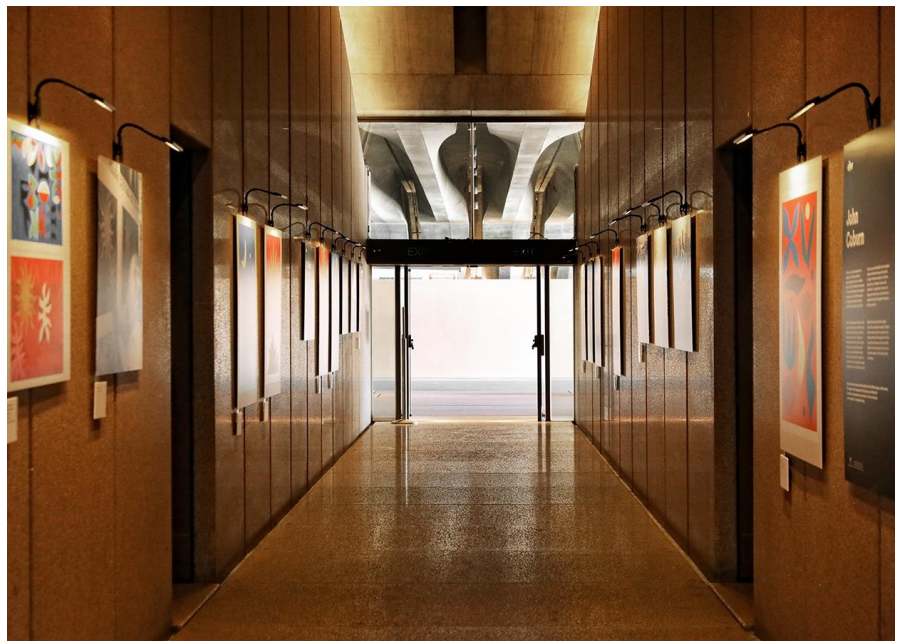
# 9

I will enter the foyer doors at the end of the queue.



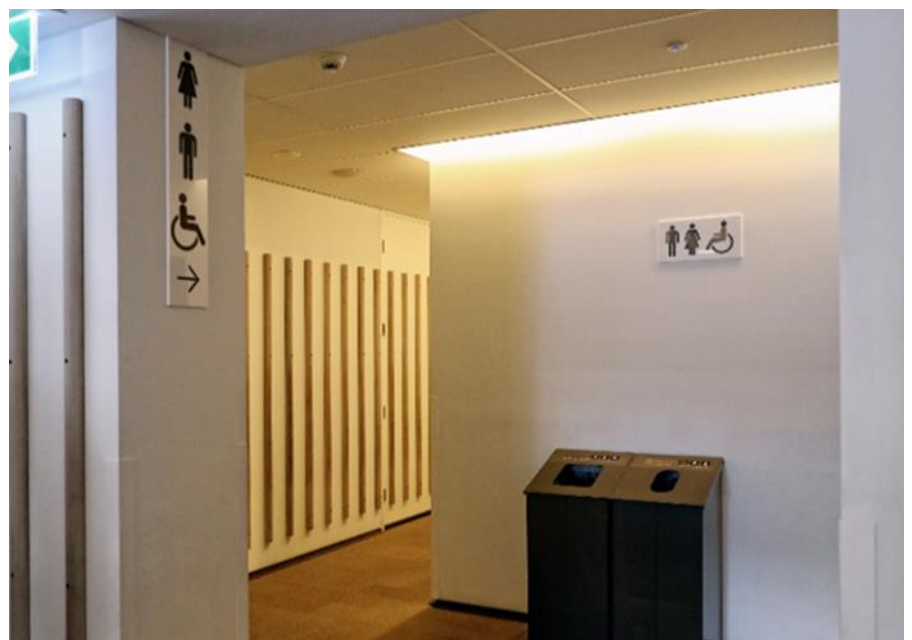
# 10

I will walk down the corridor.



# 11

I can use the bathroom at the end of the corridor on the right.



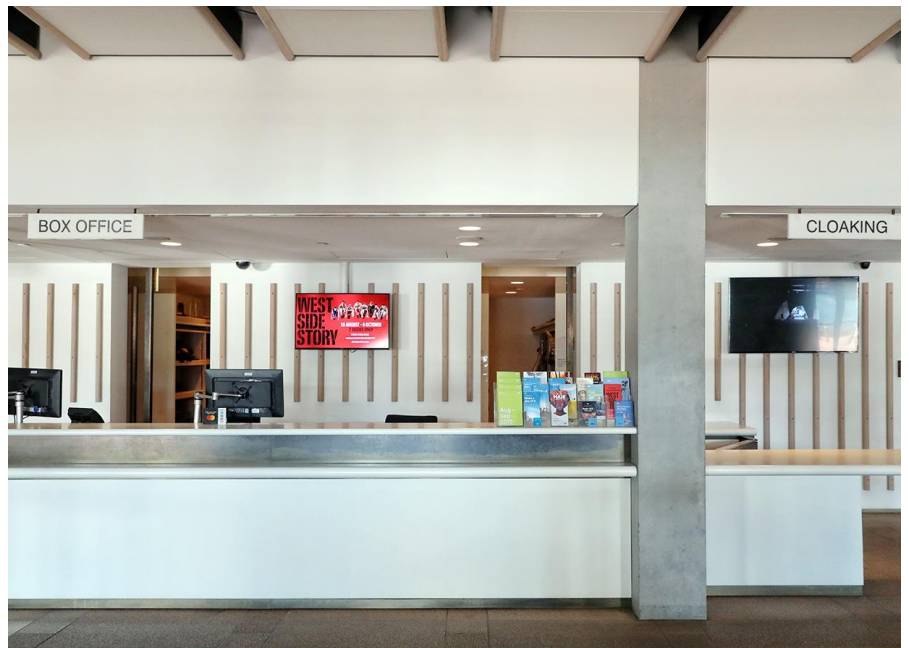
# 12

I will walk into the Western Foyer to find the entry to the Playhouse Theatre, a café and seating.



# 13

A Box Office and Cloakroom are available if I need to pick up tickets or cloak a large bag.



# 14

I can enter the Playhouse Theatre doors 15 minutes before the show starts.



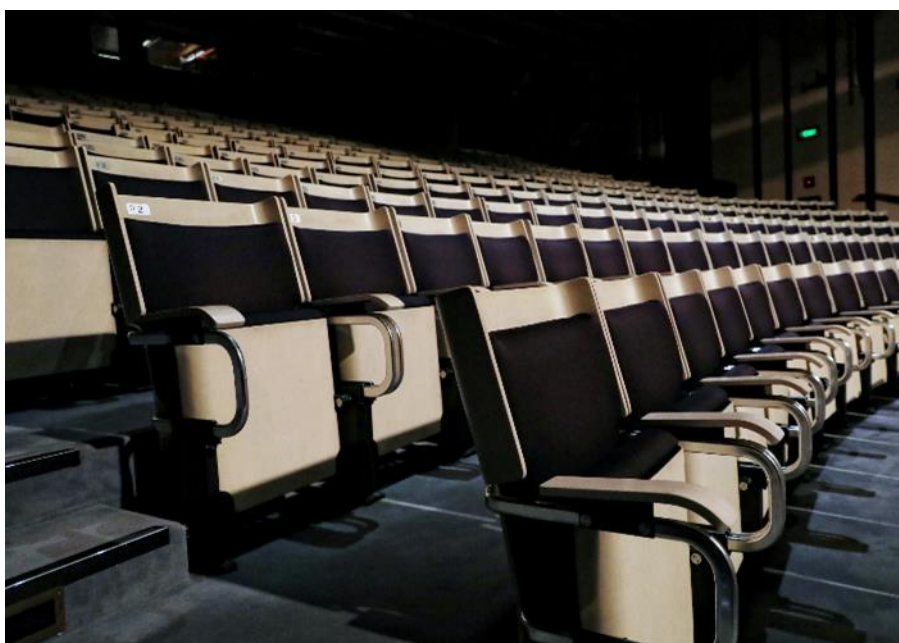
# 15

Staff will scan my ticket at the entry door.



# 16

When I enter the theatre, I will find my seat.





# Edward the Emu Story

Edward the Emu is living in a zoo. Zookeepers look after Edward.



Edward decides to visit other animals at the Zoo.



The Zookeepers don't know where Edward is! They look for him.



Edwina the Emu comes to live with Edward the Emu.



Edwina the Emu lays some eggs. She decides to get a job to support her new family.



Edwina tries out lots of jobs, but will they suit her?



# Sounds, Effects & Emotions

**15:40**

The Zookeepers are upset, they have lost Edward.

**16:05**

A lion is roaring at the Zoo.

.

**22:20**

The Zookeepers ask the audience to stand up and stretch together so they can look for Edward.

**22:25**

The Zookeepers use a detector to look for Edward. It beeps slow, then gets faster when it finds something.



**25:40**

A zookeeper is trying to get a lolly from a jar but finds a fake snake.

.

# Sounds, Effects & Emotions

**28:25**

Kids voices yell out what their favourite animal is.

**32:50**

Edwina the Emu makes a high-pitched noise as she lays 10 eggs

**42:20**

Edwina needs a taxi home. The stage is dark and coloured lights flash on and off in the shelves.

**55:00**

The audience will clap for the end of the show. You can clap as well if you want to.

**Thanks for coming  
to see us, we hope  
you have a good time.**

If you have any questions, get in touch:  
[accessibility@sydneyoperahouse.com](mailto:accessibility@sydneyoperahouse.com)  
02 9250 7777  
[sydneyoperahouse.com](http://sydneyoperahouse.com)

